



Ise Shima National Park

SHIMA

Undiscovered Journey



Shima City, Mie, Japan

Shima -Undiscovered Journey-

Ise-Shima, in Mie prefecture, is located in the Chubu region of Japan. A folk story here tells that the oceans, people, gods and forests have long been living together. Pearls are grown with great care and attention in the mother oceans and Ago Bay. Ama divers and fishermen are still fishing today. Beautiful forests protect Ise Jingu. Benefits are passed on from forests to oceans, and to us humans. Ise Shima National Park is a paradise where nature and people live side by side. In Ise Shima, nostalgic Japanese landscapes you've never seen are waiting for you.



Nature/Culture

01. About Ise Shima National Park

Ise Shima National Park stretches approximately 50km from east to west, and approximately 40km from north to south. The cities of Ise, Toba and Shima and the town of Minami-Ise are located within the national park. The park consists of two parts: an inland area that includes Ise Jingu (Japan's most prominent shrine) as well as its surrounding forest, and a coastal area that has a beautiful landscape characterised by a complex geological feature of inlets and islands along the Ria coastline. The park has grown through a harmony between nature and people, with 96 per cent of the park's land a residential area. The park is an attractive destination for many people and offers a mild climate all year round, which is perfect for leisure and sport, as well as seasonal flowers and dishes for you to enjoy.



02. Ama

'Ama' are female divers who make a living by collecting seafood and seaweed without any breathing or diving equipment. They are found only in Japan and South Korea. The Ise Shima region boasts the largest Ama population in Japan, with approximately 700 Ama divers still actively working.



03. Pearls

The world history of pearl cultivation began here in Ise Shima. Kokichi Mikimoto, founder of what it now is MIKIMOTO, successfully created the world's first cultured Akoya pearls in Ise Shima about 120 years ago. Ise Shima's pearls shine elegantly and to this day have been attracting people from all over the world.



Foods

04. Ise Lobster

Shima city boasts the largest catch of Ise lobster in Japan under its thorough resource management. Ise lobster has a strong relationship to Ise Jingu and is an invaluable good luck charm celebrating longevity. It is in season between October and April. Its unique sweetness and firm plump texture make Ise lobster a superb seafood.



05. Abalone

In this area, abalone is carefully caught one at a time by Ama divers. Abalone is said to have been presented to Ise Jingu as part of a food and wine offering to the gods for approximately 2000 years. It is one of Ise Shima's famous, gourmet foods and is in season between February and September.



06. Matoya Oysters

Matoya Oyster is a high-end brand that even foodies are raving about. Matoya oysters are grown in Matoya Bay, part of the beautiful Ria coastline, and are flavoured and very nutritious. Matoya oysters are safe to eat raw because they are kept in UV-sterilised seawater after they are caught. They are in season between October and March.



07. Anori Tiger Puffer

Wild tiger puffer, weighing over 700 grams, are caught in coastal waters along Shima Peninsula, Ise Bay, and the Enshu-nada coast. You can eat wild tiger puffer in various ways such as Tessa (sashimi) and Tecchiri (hotpot). They are carefully caught one fish at a time and are in season between October and February.



08. Bonito Flakes

Nakiri, in Shima city, has long been a famous and successful bonito fishing area, where the catch is presented to Ise Jingu and the Imperial Court. In the Nakiri area the traditional smoking method for bonito flakes has been handed down to this day and is the essence of dashi and 'umami' in washoku Japanese cuisine.



Views

09. Yokoyama Sky-View Café Terrace

The lookout offers a panoramic view of Ise Shima's abundant nature such as the beautiful Ria coastline in Ago Bay and the grand Pacific Ocean. This is one of the best spots in Ise Shima to enjoy the wonderful panoramic view of Ago Bay, which has a complex coastline and myriad of islands. You can enjoy the great view while relaxing at the cafe.



10. Daiozaki Lighthouse & Anorisaki Lighthouse

Two of only 15 climbable lighthouses in Japan are located within Shima city. Daiozaki Lighthouse is located in Daiozaki, where a nostalgic fishing village landscape remains. The white lighthouse blends with the blue colours of the sky and the sea, creating splendid scenery. Anorisaki Lighthouse is a square lighthouse located on Anori Headland, which separates calm Matoya Bay from the Pacific Ocean. You might be able to see Mt Fuji on a clear day.



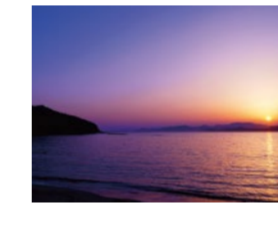
11. Kirigaki Observatory

Kirigaki Observatory - you must come here for watching a sunset. It is located within nature-rich Tomoyama Park, where you can go camping and experience various activities in a natural environment. Ago Bay coloured totally red by a sunset fascinates many of the photographers who come here.



12. Goza-Shirahama Beach

Goza-Shirahama is one of the beautiful beaches in Shima. It boasts white sands and a shallow coastline of outstandingly clear water. Located within Ago Bay, this calm beach is ideal for families with young children. During summer it becomes the perfect spot for swimming, barbecuing and camping.



Experiences

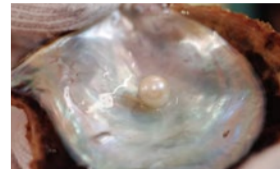
13. Ama Hut Visit

Ama huts are small areas for Ama divers to rest after dives. You will have a meal while hearing stories about diving and the sea from Ama divers at a replica Ama hut. Would you like to have a luxurious time savouring fresh local seafoods while enjoying a panoramic ocean view at an Ama hut?



14. Pearl Harvesting

Ago Bay is a pearl producing bay. Try pearl harvesting while learning the process of pearl production. You won't know the colour, shape or size until you open them. You can also select pearls to make your own accessories.



15. Shima Nature School

Surrounded by the abundant nature of Ise Shima National Park, this is a fun place that offers all sorts of outdoor activities and programs all year round such as sea kayak trips to various sized islands on Ago Bay, water ball floating activities, guided walks around the town and cycling tours. You can enjoy marine activities that make use of Ago Bay such as sea kayaking and water ball floating.



Onsens

16. Shima Onsens

Ise Shima is full of onsens. Soak in a peaceful onsen surrounded by the abundant nature of the national park to relax and rejuvenate. You will surely have a special time enjoying views of the beautiful beach and sunset.



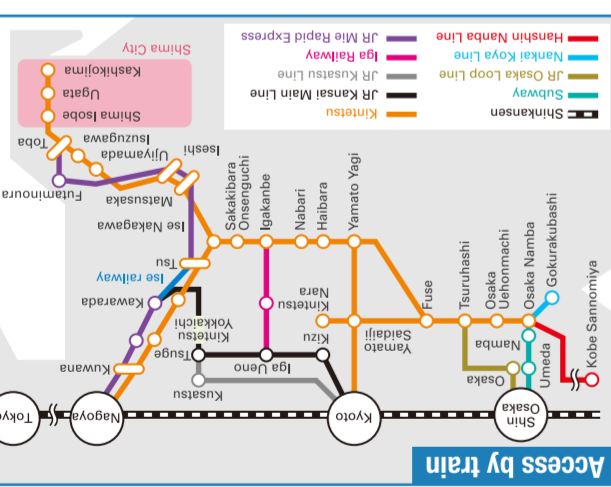
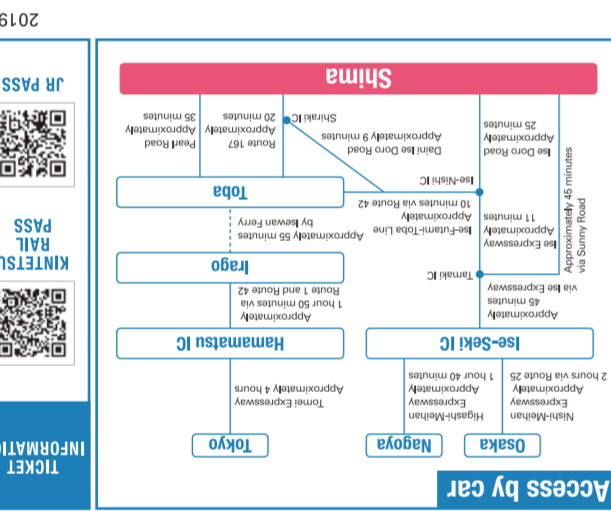
Stay

Kashikojima, host to the G7 Ise Shima Summit, is lined with high-end luxury hotels. It's nice to stay at a traditional Japanese ryokan inn or minshuku guest house to experience Japanese culture or be adventurous and go camping in the national park enjoying a starry night.



Eat

In the evening, we recommend you try locals' favourite izakaya or sushi restaurants. How about savouring Shima's local seafood while talking to locals and other tourists?



Leisure Spots

17. Shima Spain Village

This is a theme-park-based resort for people of all ages. The park boasts a social media-worthy Spanish townscape replica that you can't pass up taking pictures of, as well as a huge variety of rides from relaxing to extreme, cheerful parades that welcome audience participation and more. Resort-style Hotel Shima Spain Mura and Himawari-jiri-hot spring, which includes a nice outdoor bath with a panoramic oceanic view, are located near the park.



18. Shima Marineland

The highlight is a feeding demonstration by Ama divers, who dive beautifully in a tank with 2500 migratory fish. Also popular are the cute penguins and sunfish.



19. Shima Mediterranean Village

This is a resort village replica of a Mediterranean townscape built on a large piece of land facing Ago Bay. Craft workshops for tiles and decoupage as well as Ago Bay Cruises are available for day-trippers.



20. Ago Bay cruise

This is a 50-minute sightseeing cruise on Ago Bay aboard the large Esperanza or a small boat for trips to small islands within the bay.



Historical Spots

21. Izawanomiya Shrine

Izawanomiya Shrine was built approximately 2000 years ago and is a sub-shrine of Naiku in Ise Jingu. Amaterasu-Omikami is enshrined there and just like Ise Jingu Izawanomiya Shrine is rebuilt every 20 years. Since the Edo era, the shrine has been a pilgrim destination like Naiku and Geku of Ise Jingu making it a prestigious shrine.



22. Amano Iwato

At the end of the approach in a dreamlike cedar forest filled with fresh air is a cave where beautiful water springs. This clear spring water has been used as one of Japan's 100 most remarkable waters. Amano Iwato Shrine has a strong connection to Ise Jingu since in a myth it is believed to be where Amaterasu-Omikami hid herself.



23. Katada Inari Shrine

This beautiful shrine with a red Torii gate corridor was built 400 or so years ago by locals. The painted ceiling in the main hall, along with the glazed roof tile of Urashima-taro, make this shrine highly artistic. The lookout offers a wonderful coastal view.



24. Hanakake Ebisu

The big statue of Ebisu sitting near Ukehi Shrine in Hamajima for some reason doesn't have a nose for most of the year. This is not malicious, but a kind of tradition unique to fishing villages. Fishermen secretly shave off his nose during the night and keep it as a good luck charm for their success in arriving at the best fishing spot before anyone else.



Flowers

25. Cherry Blossoms

Shima city has several cherry blossoms spots where you can experience Japanese spring.

- Between late February and mid-March: Daijii Temple (Tenni cherry blossoms)
- Between late March and early April: Sozo-no-mori Yokoyama/Tomoyama Park (Yoshino cherry blossoms/Yoko cherry blossoms)
- Early April: Amano Iwato (Oshima cherry blossoms)



26. Hydrangeas

During the Japanese rainy season between June and July every year, the hydrangeas at Yokoyama Picnic Site and Daijii temple, in Nakiri, Daio-cho, come into flower. Hydrangeas are a flower that you must see while you are in Japan, because they are fleeting and beautiful with soft colours in the rain. By the time the hydrangea season ends, summer begins.



27. Shima City Tourist Garden

Shima City Tourist Garden offers beautiful flowers for each season: moss phlox for spring (April), sunflower for summer (July) and cosmos for autumn (November).



Golf

28. Shima's Four Golf Courses

Located in the rich natural environment within Ise Shima National Park and with a mild climate all year round and well-maintained grass, Shima city is one of Japan's most popular golf course areas. The city has four golf courses, each very unique and entertaining for golfers.



Festivals

29. Ise Lobster Festival (First Saturday of June)

Ise lobster festival is held annually in Hamajima (Shima city) on the first Saturday of June. It celebrates the sea, which brings an abundance of seafoods every year.



30. Izawanomiya Otaue Festival (June 24th)

Isobe's traditional 'Otaue festival', or rice planting festival, is one of the three biggest in Japan and signals the coming of an early summer to Shima.



31. Seawater Splashing Festival (June or July)

This is a unique festival where participating boats and people splash each other with seawater, after Ama divers and fishermen make an offering of their catch for the day such as abalone and pray to the marine goddess for maritime safety and a rich haul.



32. Anori Puppet Show (September 15th and 16th)

Bunraku' is a traditional Japanese art in which three performers (a Tayu chanter, shamisen player and puppeteer) work together to tell a story. In Anori (Shima city) traditional Bunraku has been passed down for generations.



33. Waraji Festival (September)

In this festival, a huge two-metre long 'waraji' that is made every year especially for this festival is presented to the gods. 'Waraji' is a traditional Japanese sandal made of straw.



<https://www.tripadvisor.jp/>

Check the best accommodation and restaurants for you on TripAdvisor.

Access Information

Views

09.Yokoyama Sky-View Café Terrace
875-20 Ugata, Ago-cho, Shima-shi
8-minute drive from Ugata Station
☎0599-44-0567
Yokoyama Visitor Center
http://mador.publoamigo.jp/

10.Daiosaki Lighthouse & Anorisaki Lighthouse
A.Daiosaki Lighthouse
54 Nakiri, Daio-cho, Shima-shi
Bus Stop 2 at Ugata Station
Hop on bus 60 bound for Gozako
Hop off at Daiozaki Todai
☎0599-72-1899
http://www.daiosaki.com/

B.Anorisaki Lighthouse
794-1 Anori, Ago-cho, Shima-shi
From Bus Stop 4 at Ugata Station, hop on bus 91 bound for Anori or Anorisaki Todai Guchi.
Hop off at Anori Chugakko Mae or Anorisaki Todai Guchi
☎0599-47-5622
http://anorisaki.com/

11.Kirigaki Observatory
2199 Nakiri, Daio-cho, Shima-shi
25-minute drive from Ugata Station

12.Gozo-Shirahama Beach
Gozo, Shima-cho, Shima-shi
Bus Stop 2 at Ugata Station
Hop on bus 60 bound for Gozako
Hop off at Goza-Shirahama

Experiences

13.Ama Hut Satoumian
2279 Koshika, Shima-cho, Shima-shi
Bus Stop 2 at Ugata Station
Hop on bus 60 bound for Gozako, hop off at Azuri-Hama
☎0599-05-1212
https://satoumian.com/

14.Pearl Harvesting
A.Shinju-no-sato
1125-88 Koshika, Shima-cho, Shima-shi
30-minute drive from Ugata Station
☎0599-85-0515
http://amechan.net/

B.Pearl Miki
65-1 Goza, Shima-cho, Shima-shi
Hop on bus 60 bound for Gozako and hop off at Gozako
☎0599-88-3592
https://sesima.info/pearl-miki/

Flowers

25.Cherry Blossoms
A.Daijiji Temple
(Tenzai cherry blossoms)
409 Nakiri, Daio-cho, Shima-shi
Bus Stop 2 at Ugata Station
Hop on bus 60 bound for Gozako and hop off at Nakiri
http://www.daijiji.jp/

B.Sozo-no-mori Yokoyama
(Yoshino cherry blossoms)
875-24 Ugata, Ago-cho, Shima-shi
8-minute drive from Ugata Station
https://www.kanko-shima.com/html/search_det.php?no=20150327013507

C.Tomoyama Park
(Yoshino cherry blossoms)
2199 Nakiri, Daio-cho, Shima-shi
20-minute drive from Ugata Station
https://www.seshima-kanko.jp/pot/1353/

D.Amano Iwato
(Oshima cherry blossoms)
Erihara, Isobe-cho, Shima-shi
Bus Stop 1 at Isobe Station Bus Center
Hop on bus 60, 62, or 70 bound for Ise Sekiujji Byouin or Ise-shi Eki Mae
Hop off at Amano Iwato Guchi
https://www.kanko-shima.com/html/search_det.php?no=20150327018228

26.Hydrangeas
A.Daijiji Temple
(Hydrangeas)
409 Nakiri, Daio-cho, Shima-shi
Bus Stop 2 at Ugata Station
Hop on bus 60 bound for Gozako and hop off at Nakiri
http://www.daijiji.jp/

27.Shima City Tourist Garden
511-5 Anagawa, Isobe-cho, Shima-shi
15-minute drive from Ugata Station
https://www.seshima-kanko.jp/pot/2422/

Golf

28.Shima's Four Golf Courses
A.NEMU GOLF & RESORT
2692-3 Hazako, Hamajima-cho, Shima-shi
☎0599-52-1101
https://www.nemuresort.com/hemugolf/

B.Kintetsu Hamajima Country Club
1614-1 Hazako, Hamajima-cho, Shima-shi
☎0599-52-1141
https://golf-resort.kintetsu-re.co.jp/mie/hamajima/

C.Kintetsu Kashikojima Country Club
3620-5 Ugata, Ago-cho, Shima-shi
☎0599-43-1082
https://golf-resort.kintetsu-re.co.jp/mie/kashikojima/

D.Ise Shima Country Club
187-1 Matoya, Isobe-cho, Shima-shi
☎0599-57-3251
http://www.daiwaroyogolf.jp/iseshima_cc/

15.Shima Nature School
2199 Nakiri, Daio-cho, Shima-shi
20-minute drive from Ugata Station
☎0599-72-0733
https://www.shima-ig.com/

Onsens

16.Shima Onsens
A.Yumotoku New Hamajima
3020 Hamajima, Hamajima-cho, Shima-shi
☎0599-53-1502
https://www.hojopen.com/

B.Seaside Hotel Gelboso
1550-1 Hamajima, Hamajima-cho, Shima-shi
☎0599-53-0029
http://www.gelbosou.co.jp/

C.NEMU RESORT
2692-3 Hazako, Hamajima-cho, Shima-shi
☎0599-52-1211
https://www.nemuresort.com/

D.Premier Resort Yuga Iseshima
1645 Hamajima, Hamajima-cho, Shima-shi
☎0599-53-1551
http://www.yu-ga.in/

E.Dodo Onsen Monogatari Iseshima
1035 Hamajima, Hamajima-cho, Shima-shi
☎0599-54-1126
http://seshima.oodoonsen.jp/

F.Miyako Resort Okushima Aqua Forest
3238-1 Funakoshi, Daio-cho, Shima-shi
☎0599-73-0001
https://www.miyakoresort.ne.jp/aquavilla/index.html

G.Tomoyama Kanko Hotel
2745-37 Funakoshi, Daio-cho, Shima-shi
☎0599-72-2321
http://www.tomoyama.co.jp/

H.Kazamachi-no-yu Fukujuso
517 Watakano, Isobe-cho, Shima-shi
☎0599-57-2910
https://www.fukujuso.co.jp/

I.Hotel Shima Spain Mura
Sakazaki, Isobe-cho, Shima-shi
☎0599-57-3511
http://www.parque-net.com/hotel/index.html

J.Hotel & Resorts Ise Shima
939-6 Matoya, Isobe-cho, Shima-shi
☎0599-55-2111
http://www.daiwarosort.jp/ise/index.html

Festivals

29.Ise Lobster Festival
Hamajima, Hamajima-cho, Shima-shi
(Hamajima Seaside Park)
http://www.isebi-onsen.com/iseebi/

30.Izawanomiya Otawe Festival
374 Kamimago, Isobe-cho, Shima-shi
(Izawanomiya)

31.Seawater Splashing Festival
Wagu, Shima-cho, Shima-shi
(Wagu Fishing Port/Wagu Oshima Island)

32.Anori Puppet Show
844 Anori, Ago-cho, Shima-shi
(Anori Shrine)

33.Waraji Festival
1 Nakiri, Daio-cho, Shima-shi
(Nakiri Shrine)

Check out Shima festivals!
YouTube

Use #Shimastagram to share your experiences!
Shima City Instagram @Shimacity_official

In case of emergency check

Kazusa City

Safety tips

for Android for iPhone

K.Kokoroyu Asobi Neboya
4578-1 Koka, Ago-cho, Shima-shi
☎0599-45-0111
https://www.neboya.com/

L.Bishoku-no-kakurega
Provence
860 Shinmei, Ago-cho, Shima-shi
☎0599-46-0001
http://www.kashikojima.com/provence/

M.Kashikojima Hojoen
718-3 Shinmei, Ago-cho, Shima-shi
☎0599-43-3111
https://www.hojopen.com/

N.Teisho Basaratei
3618-74 Ugata, Ago-cho, Shima-shi
☎0599-46-1189
https://www.basaratei.com/

O.THE HIRAMATSU HOTELS & RESORTS KASHIKOJIMA
3616-52 Ugata, Ago-cho, Shima-shi
☎0599-65-7001
http://hiramatsuhotels.com/kashikojima/

P.Pearl Gourmet Inn Takesho
3100-1 Wagu, Shima-cho, Shima-shi
☎0599-85-4147
http://www.takesho.net/

Q.Shima Mediterranean Village
2619-1 Hazako, Hamajima-cho, Shima-shi
☎0599-47-0888
https://www.publoamigo.jp/

R.AMANEMU
2165 Hazako, Hamajima-cho, Shima-shi
☎0599-52-5000
https://www.aman.com/ja/jp/resorts/amanemu

S.Onsen Resort Hotel Shima Saichoraku
687-2 Shinmei, Ago-cho, Shima-shi
☎0570-550-278
http://yukai-ji@shima-saichoraku.com/

T.Therapy Resort Iseshima
832-1 Anori, Ago-cho, Shima-shi
☎0599-47-0888
http://therapy-iseshima.com/

21.Izawanomiya Shrine
374 Kamimago, Isobe-cho, Shima-shi
3-minute walk from Kamimago Station
Hop on bus 60, 62, or 70 bound for Ise Sekiujji Byouin or Ise-shi Eki Mae
Hop off at Amano Iwato Guchi.

22.Amano Iwato
Erihara, Isobe-cho, Shima-shi
Bus Stop 1 at Isobe Station Bus Center
Hop on bus 60, 62, or 70 bound for Ise Sekiujji Byouin or Ise-shi Eki Mae
Hop off at Amano Iwato Guchi.

23.Katada Inari Shrine
64 Katada, Shima-cho, Shima-shi
Bus Stop 2 at Ugata Station
Hop on bus 60 bound for Gozako
Hop off at Katada Inari Mae.

24.Hanakake Ebisu
881-1 Hamajima, Hamajima-cho, Shima-shi
Bus Stop 3 at Ugata Station
Hop on bus 70 bound for Shukura, hop off at Hamajima.

25.Shima City Tourist Garden
Roadside Station Michi-no-eki Ise Shima JI PLACE Isobe/GR Isobe
URA. Off-track-betting vendor for local horse racing!

26.Ama Hut Satoumian
2279 Koshika, Shima-cho, Shima-shi
Bus Stop 2 at Ugata Station
Hop on bus 60 bound for Gozako, hop off at Azuri-Hama
☎0599-05-1212
https://satoumian.com/

27.Shima Nature School
2199 Nakiri, Daio-cho, Shima-shi
20-minute drive from Ugata Station
☎0599-72-0733
https://www.shima-ig.com/

28.Shima Marineland
723-1 Shinmei, Ago-cho, Shima-shi
3-minute walk from Kashikojima Station
☎0599-43-1225
https://www.kintetsu.co.jp/leisure/shimamarineland/

29.Ago Bay Cruise
A.Kashikojima Espana Cruise
752-11 Shinmei, Ago-cho, Shima-shi
2-minute walk from Kashikojima Station
☎0599-43-1023
https://shima-marineleisure.com/cruise/espana/info/

B.Ago Bay Cruise
Shinmei, Ago-cho, Shima-shi
1-minute walk from Kashikojima Station
☎0599-43-1048

20.Ago Bay Cruise
A.Kashikojima Espana Cruise
752-11 Shinmei, Ago-cho, Shima-shi
2-minute walk from Kashikojima Station
☎0599-43-1023
https://shima-marineleisure.com/cruise/espana/info/

B.Ago Bay Cruise
Shinmei, Ago-cho, Shima-shi
1-minute walk from Kashikojima Station
☎0599-43-1048

21.Izawanomiya Shrine
374 Kamimago, Isobe-cho, Shima-shi
3-minute walk from Kamimago Station
Hop on bus 60, 62, or 70 bound for Ise Sekiujji Byouin or Ise-shi Eki Mae
Hop off at Amano Iwato Guchi.

22.Amano Iwato
Erihara, Isobe-cho, Shima-shi
Bus Stop 1 at Isobe Station Bus Center
Hop on bus 60, 62, or 70 bound for Ise Sekiujji Byouin or Ise-shi Eki Mae
Hop off at Amano Iwato Guchi.

23.Katada Inari Shrine
64 Katada, Shima-cho, Shima-shi
Bus Stop 2 at Ugata Station
Hop on bus 60 bound for Gozako
Hop off at Katada Inari Mae.

24.Hanakake Ebisu
881-1 Hamajima, Hamajima-cho, Shima-shi
Bus Stop 3 at Ugata Station
Hop on bus 70 bound for Shukura, hop off at Hamajima.

25.Shima City Tourist Garden
Roadside Station Michi-no-eki Ise Shima JI PLACE Isobe/GR Isobe
URA. Off-track-betting vendor for local horse racing!

26.Ama Hut Satoumian
2279 Koshika, Shima-cho, Shima-shi
Bus Stop 2 at Ugata Station
Hop on bus 60 bound for Gozako, hop off at Azuri-Hama
☎0599-05-1212
https://satoumian.com/

27.Shima Nature School
2199 Nakiri, Daio-cho, Shima-shi
20-minute drive from Ugata Station
☎0599-72-0733
https://www.shima-ig.com/

28.Shima Marineland
723-1 Shinmei, Ago-cho, Shima-shi
3-minute walk from Kashikojima Station
☎0599-43-1225
https://www.kintetsu.co.jp/leisure/shimamarineland/

29.Ago Bay Cruise
A.Kashikojima Espana Cruise
752-11 Shinmei, Ago-cho, Shima-shi
2-minute walk from Kashikojima Station
☎0599-43-1023
https://shima-marineleisure.com/cruise/espana/info/

B.Ago Bay Cruise
Shinmei, Ago-cho, Shima-shi
1-minute walk from Kashikojima Station
☎0599-43-1048

20.Ago Bay Cruise
A.Kashikojima Espana Cruise
752-11 Shinmei, Ago-cho, Shima-shi
2-minute walk from Kashikojima Station
☎0599-43-1023
https://shima-marineleisure.com/cruise/espana/info/

B.Ago Bay Cruise
Shinmei, Ago-cho, Shima-shi
1-minute walk from Kashikojima Station
☎0599-43-1048

21.Izawanomiya Shrine
374 Kamimago, Isobe-cho, Shima-shi
3-minute walk from Kamimago Station
Hop on bus 60, 62, or 70 bound for Ise Sekiujji Byouin or Ise-shi Eki Mae
Hop off at Amano Iwato Guchi.

22.Amano Iwato
Erihara, Isobe-cho, Shima-shi
Bus Stop 1 at Isobe Station Bus Center
Hop on bus 60, 62, or 70 bound for Ise Sekiujji Byouin or Ise-shi Eki Mae
Hop off at Amano Iwato Guchi.

23.Katada Inari Shrine
64 Katada, Shima-cho, Shima-shi
Bus Stop 2 at Ugata Station
Hop on bus 60 bound for Gozako
Hop off at Katada Inari Mae.

24.Hanakake Ebisu
881-1 Hamajima, Hamajima-cho, Shima-shi
Bus Stop 3 at Ugata Station
Hop on bus 70 bound for Shukura, hop off at Hamajima.

25.Shima City Tourist Garden
Roadside Station Michi-no-eki Ise Shima JI PLACE Isobe/GR Isobe
URA. Off-track-betting vendor for local horse racing!

26.Ama Hut Satoumian
2279 Koshika, Shima-cho, Shima-shi
Bus Stop 2 at Ugata Station
Hop on bus 60 bound for Gozako, hop off at Azuri-Hama
☎0599-05-1212
https://satoumian.com/

27.Shima Nature School
2199 Nakiri, Daio-cho, Shima-shi
20-minute drive from Ugata Station
☎0599-72-0733
https://www.shima-ig.com/

28.Shima Marineland
723-1 Shinmei, Ago-cho, Shima-shi
3-minute walk from Kashikojima Station
☎0599-43-1225
https://www.kintetsu.co.jp/leisure/shimamarineland/

29.Ago Bay Cruise
A.Kashikojima Espana Cruise
752-11 Shinmei, Ago-cho, Shima-shi
2-minute walk from Kashikojima Station
☎0599-43-1023
https://shima-marineleisure.com/cruise/espana/info/

B.Ago Bay Cruise
Shinmei, Ago-cho, Shima-shi
1-minute walk from Kashikojima Station
☎0599-43-1048

20.Ago Bay Cruise
A.Kashikojima Espana Cruise
752-11 Shinmei, Ago-cho, Shima-shi
2-minute walk from Kashikojima Station
☎0599-43-1023
https://shima-marineleisure.com/cruise/espana/info/

B.Ago Bay Cruise
Shinmei, Ago-cho, Shima-shi
1-minute walk from Kashikojima Station
☎0599-43-1048

21.Izawanomiya Shrine
374 Kamimago, Isobe-cho, Shima-shi
3-minute walk from Kamimago Station
Hop on bus 60, 62, or 70 bound for Ise Sekiujji Byouin or Ise-shi Eki Mae
Hop off at Amano Iwato Guchi.

22.Amano Iwato
Erihara, Isobe-cho, Shima-shi
Bus Stop 1 at Isobe Station Bus Center
Hop on bus 60, 62, or 70 bound for Ise Sekiujji Byouin or Ise-shi Eki Mae
Hop off at Amano Iwato Guchi.

23.Katada Inari Shrine
64 Katada, Shima-cho, Shima-shi
Bus Stop 2 at Ugata Station
Hop on bus 60 bound for Gozako
Hop off at Katada Inari Mae.

24.Hanakake Ebisu
881-1 Hamajima, Hamajima-cho, Shima-shi
Bus Stop 3 at Ugata Station
Hop on bus 70 bound for Shukura, hop off at Hamajima.

25.Shima City Tourist Garden
Roadside Station Michi-no-eki Ise Shima JI PLACE Isobe/GR Isobe
URA. Off-track-betting vendor for local horse racing!

26.Ama Hut Satoumian
2279 Koshika, Shima-cho, Shima-shi
Bus Stop 2 at Ugata Station
Hop on bus 60 bound for Gozako, hop off at Azuri-Hama
☎0599-05-1212
https://satoumian.com/

27.Shima Nature School
2199 Nakiri, Daio-cho, Shima-shi
20-minute drive from Ugata Station
☎0599-72-0733
https://www.shima-ig.com/

28.Shima Marineland
723-1 Shinmei, Ago-cho, Shima-shi
3-minute walk from Kashikojima Station
☎0599-43-1225
https://www.kintetsu.co.jp/leisure/shimamarineland/

29.Ago Bay Cruise
A.Kashikojima Espana Cruise
752-11 Shinmei, Ago-cho, Shima-shi
2-minute walk from Kashikojima Station
☎0599-43-1023
https://shima-marineleisure.com/cruise/espana/info/

B.Ago Bay Cruise
Shinmei, Ago-cho, Shima-shi
1-minute walk from Kashikojima Station
☎0599-43-1048

20.Ago Bay Cruise
A.Kashikojima Espana Cruise
752-11 Shinmei, Ago-cho, Shima-shi
2-minute walk from Kashikojima Station
☎0599-43-1023
https://shima-marineleisure.com/cruise/espana/info/

B.Ago Bay Cruise
Shinmei, Ago-cho, Shima-shi
1-minute walk from Kashikojima Station
☎0599-43-1048

21.Izawanomiya Shrine
374 Kamimago, Isobe-cho, Shima-shi
3-minute walk from Kamimago Station
Hop on bus 60, 62, or 70 bound for Ise Sekiujji Byouin or Ise-shi Eki Mae
Hop off at Amano Iwato Guchi.

22.Amano Iwato
Erihara, Isobe-cho, Shima-shi
Bus Stop 1 at Isobe Station Bus Center
Hop on bus 60, 62, or 70 bound for Ise Sekiujji Byouin or Ise-shi Eki Mae
Hop off at Amano Iwato Guchi.

23.Katada Inari Shrine
64 Katada, Shima-cho, Shima-shi
Bus Stop 2 at Ugata Station
Hop on bus 60 bound for Gozako
Hop off at Katada Inari Mae.

24.Hanakake Ebisu
881-1 Hamajima, Hamajima-cho, Shima-shi
Bus Stop 3 at Ugata Station
Hop on bus 70 bound for Shukura, hop off at Hamajima.

25.Shima City Tourist Garden
Roadside Station Michi-no-eki Ise Shima JI PLACE Isobe/GR Isobe
URA. Off-track-betting vendor for local horse racing!

26.Ama Hut Satoumian
2279 Koshika, Shima-cho, Shima-shi
Bus Stop 2 at Ugata Station
Hop on bus 60 bound for Gozako, hop off at Azuri-Hama
☎0599-05-1212
https://satoumian.com/

27.Shima Nature School
2199 Nakiri, Daio-cho, Shima-shi
20-minute drive from Ugata Station
☎0599-72-0733
https://www.shima-ig.com/

28.Shima Marineland
723-1 Shinmei, Ago-cho, Shima-shi
3-minute walk from Kashikojima Station
☎0599-43-1225
https://www.kintetsu.co.jp/leisure/shimamarineland/

29.Ago Bay Cruise
A.Kashikojima Espana Cruise
752-11 Shinmei, Ago-cho, Shima-shi
2-minute walk from Kashikojima Station
☎0599-43-1023
https://shima-marineleisure.com/cruise/espana/info/

B.Ago Bay Cruise
Shinmei, Ago-cho, Shima-shi
1-minute walk from Kashikojima Station
☎0599-43-1048

20.Ago Bay Cruise
A.Kashikojima Espana Cruise
752-11 Shinmei, Ago-cho, Shima-shi
2-minute walk from Kashikojima Station
☎0599-43-1023
https://shima-marineleisure.com/cruise/espana/info/

B.Ago Bay Cruise
Shinmei, Ago-cho, Shima-shi
1-minute walk from Kashikojima Station
☎0599-43-1048

21.Izawanomiya Shrine
374 Kamimago, Isobe-cho, Shima-shi
3-minute walk from Kamimago Station
Hop on bus 60, 62, or 70 bound for Ise Sekiujji Byouin or Ise-shi Eki Mae
Hop off at Amano Iwato Guchi.

22.Amano Iwato
Erihara, Isobe-cho, Shima-shi
Bus Stop 1 at Isobe Station Bus Center
Hop on bus 60, 62, or 70 bound for Ise Sekiujji Byouin or Ise-shi Eki Mae
Hop off at Amano Iwato Guchi.

23.Katada Inari Shrine
64 Katada, Shima-cho, Shima-shi
Bus Stop 2 at Ugata Station
Hop on bus 60 bound for Gozako
Hop off at Katada Inari Mae.

24.Hanakake Ebisu
881-1 Hamajima, Hamajima-cho, Shima-shi
Bus Stop 3 at Ugata Station
Hop on bus 70 bound for Shukura, hop off at Hamajima.

25.Shima City Tourist Garden
Roadside Station Michi-no-eki Ise Shima JI PLACE Isobe/GR Isobe
URA. Off-track-betting vendor for local horse racing!

26.Ama Hut Satoumian
2279 Koshika, Shima-cho, Shima-shi
Bus Stop 2 at Ugata Station
Hop on bus 60 bound for Gozako, hop off at Azuri-Hama
☎0599-05-1212
https://satoumian.com/

27.Shima Nature School
2199 Nakiri, Daio-cho, Shima-shi
20-minute drive from Ugata Station
☎0599-72-0733
https://www.shima-ig.com/

28.Shima Marineland
723-1 Shinmei, Ago-cho, Shima-shi
3-minute walk from Kashikojima Station
☎0599-43-1225
https://www.kintetsu.co.jp/leisure/shimamarineland/

29.Ago Bay Cruise
A.Kashikojima Espana Cruise
752-11 Shinmei, Ago-cho, Shima-shi
2-minute walk from Kashikojima Station
☎0599-43-1023
https://shima-marineleisure.com/cruise/espana/info/